

PERIODONTAL



EVEREDGE[®] 2.0 TECHNOLOGY

| The Most Advanced Scaler Ever

How the best perform



A NOTE FROM OUR CEO

DEAR HU-FRIEDY CUSTOMERS,

I am excited to introduce the most advanced scaler ever made: **EverEdge 2.0**. Hu-Friedy is very proud of this new product and we believe it will change the way you perform at your best.

Ten years ago, we introduced our EverEdge scaler to satisfy your desire for a sharper instrument that lasts longer. It quickly became, and remains, the top selling scaler in the world. And now, we have done it again – but better! Due to advancements in technology and metallurgy, and our investments in advanced manufacturing techniques, we have developed a new product which is **EVEN SHARPER & LONGER LASTING!**

You will be amazed at how well EverEdge 2.0 performs. You will get more longevity from this instrument than any other on the market while creating the best clinical outcomes possible for your patients. When it eventually does start to lose its phenomenal edge, you can choose to recycle it through our Envirodent® Program, or sharpen

it and extend its life even further. Either way, it will always outperform ANY other scaler on the market. **No gimmicks, coatings or magic dust; it's simply the "Science of Sharp."**

Thank you for trusting us to provide products for your practice – we take that responsibility very seriously and will not let you down.



All the best,



Ron Saslow

Chief Executive Officer
& Chairman of the Board

MEET THE INSTRUMENT MAKERS

Martin Schnekenburger and Neville Hammond have each been making dental instruments since the 1960s. Because Hu-Friedy is so invested in creating the sharpest scaler for our customers, we knew we had to tap into their combined 100 years of experience in order to find the best solution. Martin and Neville crafted what has become EverEdge 2.0, and taught our Hu-Friedy artisans to recreate these sharp edges for you.

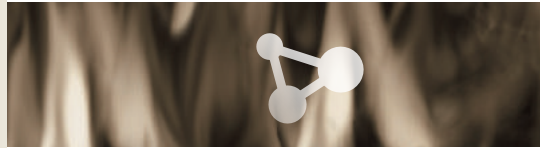


THE MAKING OF EVEREDGE 2.0

What will the newest, most advanced, sharpest and longest-lasting scaler on the market do for you? Help you perform *better than ever...*

Introducing **EVEREDGE 2.0**

STAYS SHARPER EVEN LONGER



EverEdge 2.0 uses a new, optimized heat control process in order to maintain the hard, sharp edge. This heat control, plus several manufacturing intricacies in Hu-Friedy's proprietary process, provide the durability needed for effective procedures and continued use.

UNCOATED PERFORMANCE

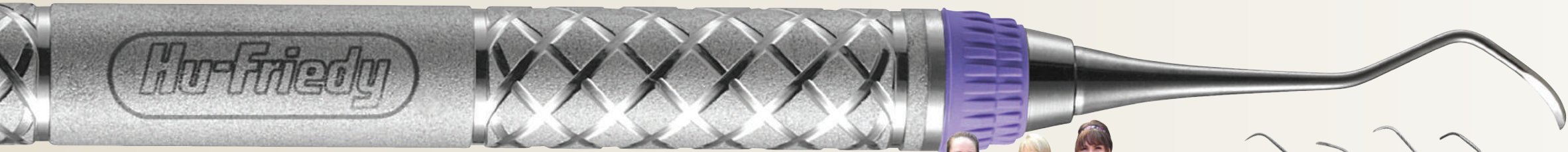


Similar to the original EverEdge technology, our proprietary processing ensures that the superior edge retention & wear characteristics of EverEdge 2.0 will last the entire life of the instrument. Since it's not a superficial coating, these characteristics can't be sharpened or scraped away. EverEdge 2.0 scalers can be resharpened at any point to extend their life.

REVOLUTIONARY TESTING SYSTEM



Hu-Friedy has invested in a custom blade evaluation system to ensure clinicians are receiving the sharpest possible instruments. Blades from every batch of EverEdge 2.0 are tested right off the factory line to confirm that the sharpness value remains in our target range, averaging 5 newtons of force required to cut the test material.



NEW FINELY-HONED FINISH



EverEdge scalers are sharp...EverEdge 2.0 scalers are even sharper. Using an enhanced finishing process, Hu-Friedy's professional artisans are creating edges that are scientifically measured to be over 60% sharper than the next closest competitor. Less force means easier, more comfortable scaling for the clinician and patient.

DIAMOND KNURL METAL HANDLE



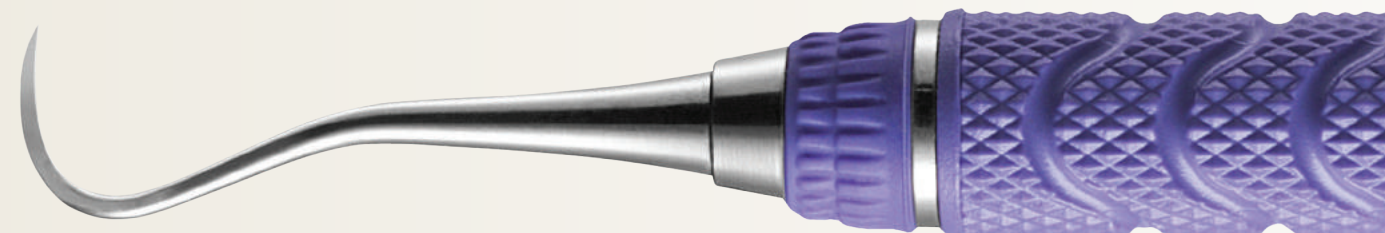
The same EverEdge handle you love! The unique diamond knurl pattern on the large diameter handle provides a confident and comfortable grasp. The #9 EverEdge handle was also designed to be the optimal weight for reduced hand fatigue.

NEW PURPLE GRIPS

Celebrating Dental Hygiene every day with new hygiene-purple grips! The colored grips also allow for easy identification of the EverEdge 2.0 scalers in each set-up.

RESIN 8 COLORS HANDLE

All EverEdge 2.0 scaler patterns available can also be ordered with a Resin 8 Colors handle. These lightweight resin handles use a color-coded system to easily identify scalers & cures that correspond to areas of the mouth.



WHY EVEREDGE 2.0?

EVEREDGE® 2.0 vs THE COMPETITORS

WHO TESTED THE INSTRUMENTS?

Independent testing was conducted by CATRA, a specialized blade laboratory. They evaluated Hu-Friedy EverEdge scalers alongside four competitors' instruments.

HOW WERE THE INSTRUMENTS TESTED?

The blade of each instrument was tested by repeatedly pushing it into a specially calibrated silicone test strip. The amount of force required to push the blade into the test media was measured in Newtons, a common international unit used to measure tension and shear force. The less force required to penetrate the media indicates a sharper blade.

The blades of each instrument were also subjected to multiple strokes on the same calibrated test strip to simulate wear. These repeated strokes will begin to reduce the sharpness of the blade and therefore require more force to enter the test strip. After a predetermined amount of strokes is applied, the force to make the final cut is measured to determine the sharpness durability of the blade.

EVEREDGE 2.0 is **72%** sharper out of the box than the next closest competitor.

AND after 500 strokes it's...

63%

Sharper than American Eagle

68%

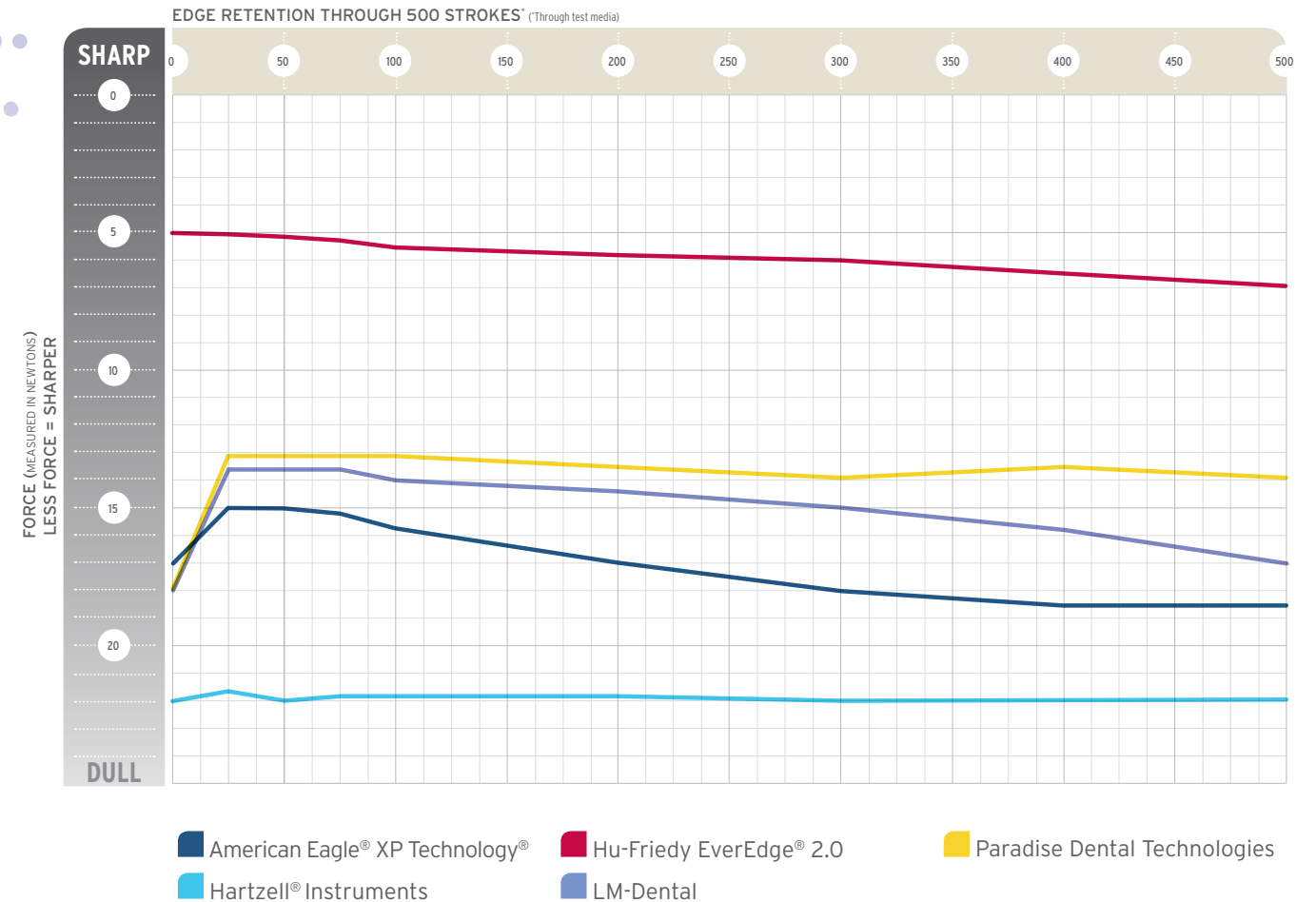
Sharper than Hartzell

56%

Sharper than LM

50%

Sharper than PDT



WHY DO SOME INSTRUMENTS GET SHARPER AFTER SEVERAL USES?

When there is a spike in sharpness, that is due to the burr formation on the product. A burr is a small flap of metal that actually covers the instrument's blade. Burr formations occur when the finishing step is done too quickly – an indication of poor process control. EverEdge 2.0 scalers do not have a burr formation due to our refined process and techniques.

THE SCIENCE OF EVEREDGE 2.0

The companies and products named above are trademarks or registered trademarks of their respective owners.

WHAT CLINICIANS ARE SAYING

“Every time I used this scaler, it felt like the first time it was used. **NICE & SHARP!**”

– RUSSELL HARMS, RDH, BSDH

“EverEdge 2.0 worked well with **HEAVY DEPOSITS!**”

– ASHLEY DEAL, RDH

“I like the grip it had on calculus - it was **SHARPER** than all of my other scalers!”

– ELWIRA BYJOS, RDH

“The EverEdge 2.0 blades **SHARPENED VERY EASILY** and remained sharper with each additional use.”

– JUDITH REID, M Ed, RDH

To learn more about EverEdge 2.0, visit HU-FRIEDY.COM/EE2

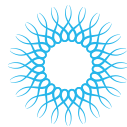
PERIODONTAL



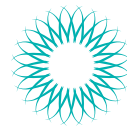
RESTORATIVE



ORTHODONTIC



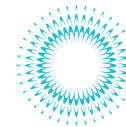
INSTRUMENT MANAGEMENT



ENDODONTIC



SURGICAL



ULTRASONIC SCALING



Hu-Friedy Mfg. Co., LLC: 3232 N. Rockwell St. | Chicago, IL 60618 | USA
Telephone: 1-800-Hu-Friedy (1-773-975-6100) | Website: Hu-Friedy.com

©2016 Hu-Friedy Mfg. Co., LLC. All rights reserved. Hu-Friedy provided EverEdge 2.0 samples to clinicians for evaluation. HF-4792/0116

Hu-Friedy